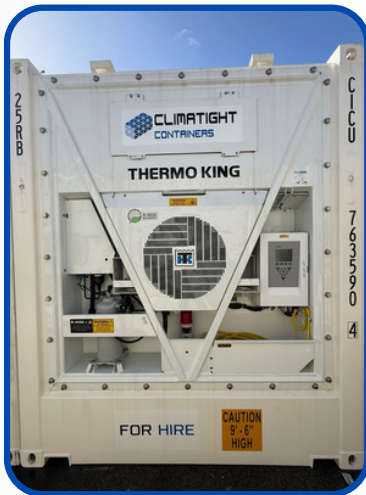




CLIMATIGHT CONTAINERS

THINKING OUTSIDE THE BOX

20FT REFRIGERATED CONTAINER - HIGH CUBE



Tare Weight - 3,120kg
Payload Capacity - 27,360kg
Max Gross Weight - 30,480kg
Internal Length - 5,190mm
Internal Width - 2,356mm
Internal Height - 2,587mm
External Length - 6,060mm
External Width - 2,440mm
External Height - 2,896mm



Measurements may vary from unit to unit*

New Units

Three Phase

Volts - 380/460

Amps - 32

Plug - 4 or 5 Pin Wilco Type

Frequency - 50/60hz

Second Hand Units



**CLIMATIGHT
CONTAINERS**
THINKING OUTSIDE THE BOX

ENQUIRE TODAY

[CLICK HERE FOR
DIRECT LINK TO
OUR WEBSITE](#)

Western Australia

Unit 14, 4 Roper St
O'CONNOR
WA 6163

South Australia

Coghlan Rd
OUTER HARBOR
SA 5018

For more information on refrigerated containers or to enquire about a storage solution to suit you, don't hesitate to contact us!



0475 000 560



sales@climatight.com.au



CLIMATIGHT
CONTAINERS
THINKING OUTSIDE THE BOX