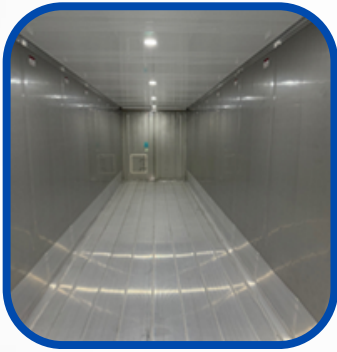




CLIMATIGHT CONTAINERS

THINKING OUTSIDE THE BOX

40FT HIGH CUBE REFRIGERATED CONTAINER TWO-PALLET WIDE



Tare Weight - 4,460kg

Payload Capacity - 29,450kg

Max Gross Weight - 30,480kg

Internal Length - 11,584mm

Internal Width - 2,356mm

Internal Height - 2,695mm

External Length - 12,192mm

External Width - 2,500mm

External Height - 2,8960mm

Measurements may vary from unit to unit*

Three Phase

Volts - 380/460

Amps - 32

Plug - 4 Pin Wilco Type

Frequency - 50/60hz

Key Features:

- Flat Flooring
- Flush Mounted Internal Lighting
- Electronic Entrapment Alarm

Wider Internal Dimensions:

- Pallet-wide containers are specifically designed to accommodate Australian standard pallets (1165mm x 1165mm),
- Allows two standard Australian pallets to be placed side by side, reducing wasted space.

Typical Uses:

- Ideal for bulk storage of palletised produce, such as:
- Perishable foods (meat, produce, dairy)
- Pharmaceuticals
- Temperature-sensitive packaged goods



CLIMATIGHT
CONTAINERS

THINKING OUTSIDE THE BOX

ENQUIRE TODAY

[CLICK HERE FOR
DIRECT LINK TO
OUR WEBSITE](#)

Western Australia

Unit 14, 4 Roper St
O'CONNOR
WA 6163

South Australia

Coghlan Rd
OUTER HARBOR
SA 5018

For more information on refrigerated containers or to enquire about a storage solution to suit you, don't hesitate to contact us!



0475 000 560



sales@climatight.com.au



CLIMATIGHT
CONTAINERS
THINKING OUTSIDE THE BOX