



CLIMATIGHT CONTAINERS

THINKING OUTSIDE THE BOX

ABOUT CLIMATIGHT

In 2016 Climatight Containers was born out of frustration with an industry that provided average customer service and poorly maintained refrigerated containers for hire and sale.

Climatight has a focus on premium refrigerated containers of all shapes and sizes including modifications and custom-built units for any project.

Climatight combines over 15 years of experience in reefer container service and logistics to bridge the gap and provide the highest quality equipment and industry leading customer service.



CLIMATIGHT
CONTAINERS

THINKING OUTSIDE THE BOX

WHY CLIMATIGHT

High Quality & Reliable Equipment

Exceptional Customer Service

24/7 Breakdown Support for Hires and After Sales



Climatight Containers is not your run of the mill container hire and sales company.

We are obsessive about the quality of our equipment, and customer satisfaction is paramount.

When you choose our refrigerated containers, you're investing in a solution that offers highly reliable equipment, fast and efficient service, and a highly skilled in-house team of refrigeration mechanics. We deliver service with a high attention to detail, ensuring your project runs smoothly and efficiently.



CLIMATIGHT
CONTAINERS
THINKING OUTSIDE THE BOX

COMPANY VALUES

Fast and expert service with a genuine customer first approach

Reliable, high-quality equipment

In house refrigeration expertise you can depend on



**CLIMATIGHT
CONTAINERS**

THINKING OUTSIDE THE BOX

MEET OUR TEAM MEMBERS

We've assembled a dream team to provide and industry leading experience



Dylan Fels
Managing Director

15 Years experience as a refrigeration technician with a Certificate III in Engineering (Mechanical Trade).



Matthew Hill
Director & CFO

Qualified Chartered Accountant with over 10 years experience in accounting, finance and taxation.



Tahlia Hitchcock
Operations Manager

Tahlia has a wealth of knowledge and an extensive career the Logistics and Equipment Hire industry; she has worked in a wide variety of roles at both large and medium sized businesses working her way up to operations manager.



CLIMATIGHT
CONTAINERS

THINKING OUTSIDE THE BOX

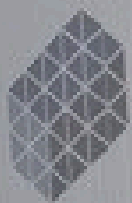
WHAT WE OFFER **ALWAYS**

**High Quality & Reliable
Equipment**

Exceptional Customer Service

Fair and Reasonable Prices

**24/7 Breakdown Support for
Hires and After Sales Service**



**CLIMATIGHT
CONTAINERS**
THINKING OUTSIDE THE BOX

Sales - Hire - Storage
© www.climatight.com.au



**CLIMATIGHT
CONTAINERS**
THINKING OUTSIDE THE BOX

WHAT OUR CUSTOMERS SAY



MATT MCDONALD
CATERING CHEF MI SCUSI FOOD

"This container has been our secret weapon, our little piece of cutting edge technology that just seems to make our lives so much easier"



PAUL GLAVOCICH
OWNER AND OPERATOR GLAVOCICH PROODUCE

"Climatights service is unbelievable and any problems we have are attended to straight away"



**CLIMATIGHT
CONTAINERS**
THINKING OUTSIDE THE BOX

REFRIGERATED SEA CONTAINER SIZES



20ft Refrigerated Sea Container

Tare Weight – 3,120kg

Payload Capacity – 27,360kg

Max Gross Weight – 30,480kg

Cubic Capacity – 28.3m³

Internal Length – 5,190mm

Internal Width – 2,290mm

Internal Height – 2,270mm

External Length – 6,060mm

External Width – 2,440mm

External Height – 2,590mm



10ft Refrigerated Sea Container

Tare Weight – 1,900kg

Payload Capacity – 8,200kg

Max Gross Weight – 10,100kg

Cubic Capacity – 13.55m³

Internal Length – 2,280mm

Internal Width – 2,290mm

Internal Height – 2,270mm

External Length – 2,990mm

External Width – 2,440mm

External Height – 2,590mm



40ft Refrigerated Sea Container

Tare Weight – 3,800kg

Payload Capacity – 27,700kg

Max Gross Capacity – 31,500kg

Cubic Capacity – 59.3m³

Internal Length – 11,590mm

Internal Width – 2,290mm

Internal Height – 2,590mm

External Length – 12,190mm

External Width – 2,440mm

External Height – 2,900mm



Measurements may vary slightly depending on manufacturer*



CLIMATIGHT
CONTAINERS

THINKING OUTSIDE THE BOX

OUR REFRIGERATED SEA CONTAINERS

*Click on the title to jump to
the container details*

10ft Containers

- [DNV Offshore](#)
- [GP Reefer](#)
- [HC Reefer](#)
- [Custom Built](#)
- [Dry Containers](#)

20ft Containers

- [DNV Offshore](#)
- [GP Reefer](#)
- [HC Reefer](#)
- [HC PW](#)
- [Custom Built](#)
- [Second Hand Reefer](#)
- [Dry Containers](#)

40ft Containers

- [GP Reefer](#)
- [HC Reefer](#)
- [HC PW Reefer](#)
- [Custom Built](#)
- [Second Hand Reefer](#)
- [Dry Containers](#)

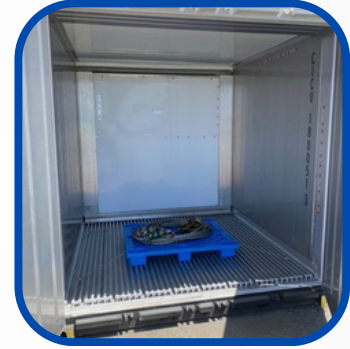


CLIMATIGHT
CONTAINERS

THINKING OUTSIDE THE BOX

10FT REFRIGERATED CONTAINER

DNV OFFSHORE



Key Features

DNV 2.7-1 Certification:

- Ensures the reefer meets strict safety and structural standards for offshore containers.
- Includes requirements for lifting, stacking, structural integrity, and resistance to harsh conditions (like saltwater corrosion, wind, and rough handling).

Refrigeration Capabilities:

- These containers maintain controlled temperatures, often between -25°C to $+25^{\circ}\text{C}$, to store food, medical supplies, or chemicals.

Robust Construction:

- Made of marine-grade materials (stainless or galvanized steel).
- Designed to be stackable and portable with forklift pockets and certified lifting points.

Applications:

- Used on offshore oil & gas platforms, ships, remote work sites, and in military or humanitarian operations.
- Common for catering companies serving offshore crews.

Tare Weight - 2,900kg

Payload Capacity - 7,900kg

Max Gross Weight - 10,800kg

Internal Length - 2,829mm

Internal Width - 2,349mm

Internal Height - 2,346mm

External Length - 2,991mm

External Width - 2,438mm

External Height - 2,591mm

Measurements may vary slightly depending on manufacturer*

Three Phase

Volts - 380/460

Amps - 32

Plug - 4 or 5 Pin Wilco Type

Frequency - 50/60hz



CLIMATIGHT
CONTAINERS

THINKING OUTSIDE THE BOX

10FT REFRIGERATED CONTAINER - GENERAL PURPOSE

Tare Weight - 2,010kg

Payload Capacity - 8,150kg

Max Gross Weight - 10,160kg

Internal Length - 2,831mm

Internal Width - 2,290mm

Internal Height - 2,390mm

External Length - 2,991mm

External Width - 2,438mm

External Height - 2,591mm

Measurements may vary slightly depending on manufacturer*

Three Phase

Volts - 380/460

Amps - 32

Plug - 4 or 5 Pin Wilco Type

Frequency - 50/60hz



CLIMATIGHT
CONTAINERS
THINKING OUTSIDE THE BOX

10FT REFRIGERATED CONTAINER - HIGH CUBE

Tare Weight - 2,100kg
Payload Capacity - 8,060kg
Max Gross Weight - 10,160kg
Internal Length - 2,387mm
Internal Width - 2,294mm
Internal Height - 2,587mm
External Length - 2,991mm
External Width - 2,438mm
External Height - 2,896mm



Second Hand Units

Measurements may vary slightly depending on manufacturer*

Three Phase
Volts - 380/460
Amps - 32
Plug - 4 or 5 Pin Wilco Type
Frequency - 50/60hz



New Units



CLIMATIGHT
CONTAINERS
THINKING OUTSIDE THE BOX

10FT REFRIGERATED CONTAINER - CUSTOM BUILD

We are able to custom build a 10ft Refrigerated Container to your requested requirements. Please contact us for more information.



Tare Weight - 2,010kg
Payload Capacity - 8,150kg
Max Gross Weight - 10,160kg
Internal Length - 2,831mm
Internal Width - 2,350mm
Internal Height - 2,390-2600mm
External Length - 2,991mm
External Width - 2,438mm
External Height - 2,591-2896mm



Measurements may vary slightly depending on manufacturer*

GP Units

HC Units

Three Phase

Volts - 380/460

Amps - 32

Plug - 4 or 5 Pin Wilco Type

Frequency - 50/60hz



10FT DRY CONTAINERS



Tare Weight - 1,300-1,350kg

Payload Capacity - kg

Max Gross Weight - 10,160-11,350kg

Internal Length - 2,840mm

Internal Width - 2,350mm

Internal Height - 2,390-2690mm

External Length - 2,990mm

External Width - 2,440mm

External Height - 2,591-2896mm



Measurements may vary slightly depending on manufacturer*

New Units

Second Hand Units



CLIMATIGHT
CONTAINERS

THINKING OUTSIDE THE BOX

20FT REFRIGERATED CONTAINER

DNV OFFSHORE



Key Features

- Tare Weight** - 4,380kg
- Payload Capacity** - 9,820kg
- Max Gross Weight** - 14,200kg
- Internal Length** - 5,454mm
- Internal Width** - 2,284mm
- Internal Height** - 2,206mm
- External Length** - 6,058mm
- External Width** - 2,438mm
- External Height** - 2,591mm

Measurements may vary slightly depending on manufacturer*

- Three Phase**
- Volts** - 380/460
- Amps** - 32
- Plug** - 4 or 5 Pin Wilco Type
- Frequency** - 50/60hz

DNV 2.7-1 Certification:

- Ensures the reefer meets strict safety and structural standards for offshore containers.
- Includes requirements for lifting, stacking, structural integrity, and resistance to harsh conditions (like saltwater corrosion, wind, and rough handling).

Refrigeration Capabilities:

- These containers maintain controlled temperatures, often between -25°C to $+25^{\circ}\text{C}$, to store food, medical supplies, or chemicals.

Robust Construction:

- Made of marine-grade materials (stainless or galvanized steel).
- Designed to be stackable and portable with forklift pockets and certified lifting points.

Applications:

- Used on offshore oil & gas platforms, ships, remote work sites, and in military or humanitarian operations.
- Common for catering companies serving offshore crews.

20FT REFRIGERATED CONTAINER - GENERAL PURPOSE



Tare Weight - 3,120kg
Payload Capacity - 27,360kg
Max Gross Weight - 30,480kg
Internal Length - 5,190mm
Internal Width - 2,290mm
Internal Height - 2,270mm
External Length - 6,060mm
External Width - 2,440mm
External Height - 2,590mm



Measurements may vary slightly depending on manufacturer*

New Units

Second Hand Units

Three Phase

Volts - 380/460

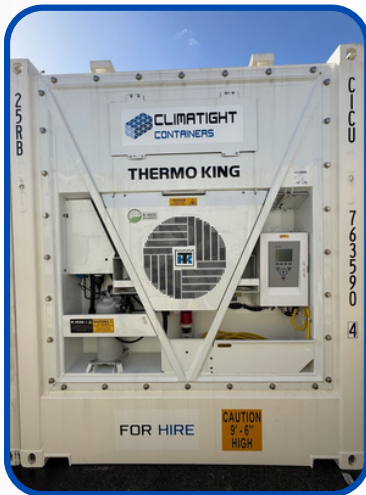
Amps - 32

Plug - 4 or 5 Pin Wilco Type

Frequency - 50/60hz



20FT REFRIGERATED CONTAINER - HIGH CUBE



Tare Weight - 3,120kg
Payload Capacity - 27,360kg
Max Gross Weight - 30,480kg
Internal Length - 5,190mm
Internal Width - 2,356mm
Internal Height - 2,587mm
External Length - 6,060mm
External Width - 2,440mm
External Height - 2,896mm



Measurements may vary slightly depending on manufacturer*

New Units

Three Phase

Volts - 380/460

Amps - 32

Plug - 4 or 5 Pin Wilco Type

Frequency - 50/60hz

Second Hand Units



CLIMATIGHT
CONTAINERS
THINKING OUTSIDE THE BOX

20FT HIGH CUBE REFRIGERATED CONTAINER TWO-PALLET WIDE



Tare Weight - 3,040kg
Payload Capacity - 27,440kg
Max Gross Weight - 30,480kg
Internal Length - 5,450mm
Internal Width - 2,356mm
Internal Height - 2,695mm
External Length - 6,060mm
External Width - 2,500mm
External Height - 2,8960mm

Measurements may vary slightly depending on manufacturer*

Three Phase
Volts - 380/460
Amps - 32
Plug - 4 Pin Wilco Type
Frequency - 50/60hz

Key Features:

- Flat Flooring
- Flush Mounted Internal Lighting
- Electronic Entrapment Alarm

Wider Internal Dimensions:

- Pallet-wide containers are specifically designed to accommodate Australian standard pallets (1165mm x 1165mm),
- Allows two standard Australian pallets to be placed side by side, reducing wasted space.

Typical Uses:

- Ideal for bulk storage of palletised produce, such as:
- Perishable foods (meat, produce, dairy)
- Pharmaceuticals
- Temperature-sensitive packaged goods

20FT REFRIGERATED CONTAINER - CUSTOM BUILD

We are able to custom build a 40ft Refrigerated Container to your requested requirements. Please contact us for more information.



Tare Weight - 2,780-3,120kg
Payload Capacity - 27,360kg
Max Gross Weight - 30,480kg
Internal Length - 5,190mm
Internal Width - 2,356mm
Internal Height - 2,390-2,695mm
External Length - 6,060mm
External Width - 2,440mm
External Height - 2,591-2896mm



Measurements may vary slightly depending on manufacturer*

Second Hand Units

GP Units

Three Phase
Volts - 380/460

HC Units

Amps - 32

Plug - 4 or 5 Pin Wilco Type

Frequency - 50/60hz



CLIMATIGHT
CONTAINERS
 THINKING OUTSIDE THE BOX

SECOND HAND 20FT REFRIGERATED CONTAINERS



CLIMATIGHT
CONTAINERS
THINKING OUTSIDE THE BOX

20FT DRY CONTAINERS



Tare Weight - 2,300-2,420kg
Payload Capacity - 28,000kg
Max Gross Weight - 30,480kg
Internal Length - 5,900mm
Internal Width - 2,350mm
Internal Height - 2,390-2,690mm
External Length - 6,060mm
External Width - 2,440mm
External Height - 2,591-2,900mm



Measurements may vary slightly depending on manufacturer*

NEW Units

Cargo Worthy Units



40FT REFRIGERATED CONTAINER - GENERAL PURPOSE

Tare Weight - 4,650kg

Payload Capacity - 29,350kg

Max Gross Weight - 34,000kg

Internal Length - 11,590mm

Internal Width - 2,290mm

Internal Height - 2,270mm

External Length - 12,190mm

External Width - 2,440mm

External Height - 2,590mm



Measurements may vary slightly depending on manufacturer*

Three Phase

Volts - 380/460

Amps - 32

Plug - 4 or 5 Pin Wilco Type

Frequency - 50/60hz



CLIMATIGHT
CONTAINERS
THINKING OUTSIDE THE BOX

40FT REFRIGERATED CONTAINER - HIGH CUBE



Tare Weight - 4,740kg
Payload Capacity - 27,700kg
Max Gross Weight - 34,000kg
Internal Length - 11,590mm
Internal Width - 2,290mm
Internal Height - 2,590mm
External Length - 12,190mm
External Width - 2,440mm
External Height - 2,900mm



Measurements may vary slightly depending on manufacturer*

New Units

Three Phase
Volts - 380/460
Amps - 32

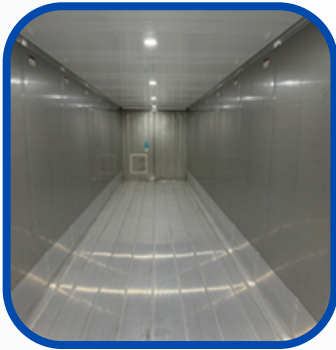
Second Hand Units

Plug - 4 or 5 Pin Wilco Type
Frequency - 50/60hz



CLIMATIGHT
CONTAINERS
THINKING OUTSIDE THE BOX

40FT HIGH CUBE REFRIGERATED CONTAINER TWO-PALLET WIDE



Tare Weight - 4,460kg

Payload Capacity - 29,450kg

Max Gross Weight - 30,480kg

Internal Length - 11,584mm

Internal Width - 2,356mm

Internal Height - 2,695mm

External Length - 12,192mm

External Width - 2,500mm

External Height - 2,8960mm

Measurements may vary slightly depending on manufacturer*

Three Phase

Volts - 380/460

Amps - 32

Plug - 4 Pin Wilco Type

Frequency - 50/60hz

Key Features:

- Flat Flooring
- Flush Mounted Internal Lighting
- Electronic Entrapment Alarm

Wider Internal Dimensions:

- Pallet-wide containers are specifically designed to accommodate Australian standard pallets (1165mm x 1165mm),
- Allows two standard Australian pallets to be placed side by side, reducing wasted space.

Typical Uses:

- Ideal for bulk storage of palletised produce, such as:
- Perishable foods (meat, produce, dairy)
- Pharmaceuticals
- Temperature-sensitive packaged goods

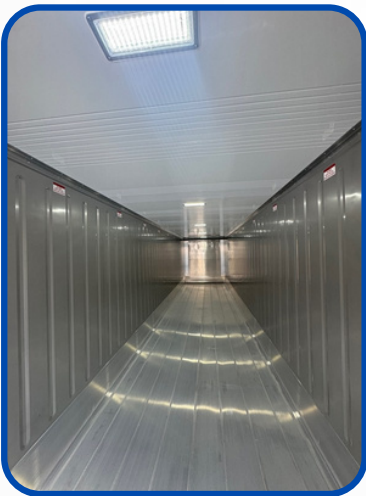


CLIMATIGHT
CONTAINERS

THINKING OUTSIDE THE BOX

40FT REFRIGERATED CONTAINER - CUSTOM BUILD

We are able to custom build a 40ft Refrigerated Container to your requested requirements. Please contact us for more information.



Tare Weight - 4,600-4,740kg
Payload Capacity - 28,350kg
Max Gross Weight - 34,00kg
Internal Length - 11,590mm
Internal Width - 2,290mm
Internal Height - 2,270-2,590mm
External Length - 12,190mm
External Width - 2,440mm
External Height - 2,590-2,900mm



Measurements may vary slightly depending on manufacturer*

GP Units

Three Phase

Volts - 380/460

Amps - 32

Plug - 4 or 5 Pin Wilco Type

Frequency - 50/60hz

HC Units



SECOND HAND 40FT REFRIGERATED CONTAINERS



CLIMATIGHT
CONTAINERS

THINKING OUTSIDE THE BOX

40FT DRY CONTAINERS



Tare Weight - 3,500-3,990kg
Payload Capacity - 26,700-29,330kg
Max Gross Weight - 30,480-34,000kg
Internal Length - 12,030mm
Internal Width - 2,350mm
Internal Height - 2,390-2,690mm
External Length - 12,190mm
External Width - 2,440mm
External Height - 2,590-2,900mm



Measurements may vary slightly depending on manufacturer*

GP Units

HC Units



CLIMATIGHT
CONTAINERS
THINKING OUTSIDE THE BOX

ACCESSORIES

Container Painting

Padlocks

PA Door

Ramps

Alarms

Curtains

Lighting

Shelving

Ventilation

Lock Boxes



CLIMATIGHT
CONTAINERS
THINKING OUTSIDE THE BOX

REFRIGERATED CONTAINER UNIT REPLACEMENT



CLIMATIGHT
CONTAINERS
THINKING OUTSIDE THE BOX

CUSTOM BUILT REFRIGERATED CONTAINERS

**Custom-Built Reefer Containers.
Cold. Smart. Built for You.
Why Choose Us?**

- ✓ Tailored Design – Any size, layout, or spec
- ✓ On-Site Ready – Plug-and-play
- ✓ Energy-Efficient – low-power options
- ✓ Smart Tech – GPS + remote temp monitoring
- ✓ Rugged Build – Extreme climate ready



Why Choose Us

- Engineered for extreme performance
- Delivered timely, anywhere in the world
- We have embedded factory partnerships to ensure the best pricing in market.
- We have inhouse refrigeration mechanics and CSC surveying capabilities for quality control.

Trusted Across Sectors

- Construction & Mining Camps – Reliable food & medical storage in the field
- Disaster Relief & NGOs – Deployable cold storage in emergencies
- Oil & Gas Projects – Remote and rugged
- Research & Exploration – Arctic/Marine expeditions, mobile bio-labs
- Military & Government Use – Tactical reefer units, built to spec

GENERAL PURPOSE CONTAINER MODIFICATIONS

General Purpose Container Modifications

If you're looking at modifying a general purpose (GP) shipping container, there are quite a few practical upgrade paths depending on whether you want storage, a workshop, living space, or something mobile.



⚠ Things to Consider

- 📄 Council Approvals & Regulations
- 🗺 Intended Use
- 🌡 Insulation & Climate Performance
- 🚚 Transport & Installation
- 🔒 Security Requirements
- 💰 Budget & Cost Control
- ⚠ Safety Considerations

Tailored Design – Any size, layout, or specifications

- ⚡ Electrical & Lighting
- 🔧 Plumbing & Utilities
- 🌡 Insulation & Climate Control
- 🏗 Structural Modifications
- 🚪 Access & Security
- ☀ External Add-Ons



Whats involved in a Climatight Modification?

- Rapid deployment compared to traditional construction
- Cost-effective and scalable solutions
- Durable, weather-resistant steel construction
- Fully customisable to your operational needs
- Portable and relocatable infrastructure

DOOR CONFIGURATIONS AVAILABLE ON NEW BUILDS



CLIMATIGHT
CONTAINERS

THINKING OUTSIDE THE BOX

WHY BUY FROM CLIMATIGHT



Climatight Containers is committed to quality and customer satisfaction. When you choose our refrigerated containers, you're investing in a solution that offers reliability, energy efficiency, and easy handling. With a focus on rigorous quality standards, we ensure that each container meets international shipping standards and provides the durability needed for long-term storage and transit.

**Unlimited Customization on
Custom Build**

Versatility

Investment Value

Independence and Control



**CLIMATIGHT
CONTAINERS**
THINKING OUTSIDE THE BOX

BUYING NEW VS SECOND HAND REFRIGERATED SEA CONTAINERS

BENEFITS TO NEW

- ✓ Longer Lifespan
- ✓ Minimal Maintenance
- ✓ Warranty
- ✓ Higher Cooling Efficiency
- ✓ Customisable

BENEFITS TO SECOND HAND

- Lower Initial Cost ✓
- Availability ✓
- Variety ✓



CLIMATIGHT
CONTAINERS
THINKING OUTSIDE THE BOX

HIRING VS BUYING A REFRIGERATED SEA CONTAINER

BENEFITS TO BUYING

- ✓ Customisable Options
 - ✓ Durable Build
- ✓ Temperature Control
- ✓ Easy Accessibility
- ✓ Energy Efficiency

BENEFITS TO HIRING

- ✓ Fully Maintained
- ✓ Serviced by qualified reefer techs (All metro areas)
- ✓ 24/7 Emergency Support (All metro areas)
- ✓ Flexibility to de-hire
- ✓ Not locked in
- ✓ No Large Capital Outlay

<u>Feature</u>	<u>Buying</u>	<u>Hiring</u>
<u>Upfront Costs</u>	High	Low
<u>Customization</u>	Full customization	NA
<u>Maintenance</u>	Owners	Included
<u>Flexibility</u>	NA	Short-term flexibility
<u>Ownership</u>	Full ownership and control	Temporary use only

WHY HIRE FROM CLIMATIGHT



Cost-Effective

Budget Friendly

Short Term Use

Flexibility

Adaptable Duration

No Long-Term Commitment

Maintenance and Storage

Maintenance Free

Storage Solution

Delivery and Setup

Hassle Free

Time Saving

Shipping container rent offers several advantages over purchasing:

- No expensive maintenance and repair costs, with can often be thousands of dollars, we take care of everything.
- Flexible hire lengths in case usage changes.
- No large initial capital outlays, keeping cashflow consistent.



CLIMATIGHT
CONTAINERS

THINKING OUTSIDE THE BOX

THINGS TO CONSIDER WHEN PREPARING FOR A REFRIGERATED SEA CONTAINER

Site Surface and Setup

- Is the ground flat, solid and well drained?
- Are there any overhead obstructions?
- Will you have good airflow around the refrigeration unit?

Container Size and Space

- Have you confirmed you have enough room for the container onsite?
- Do you have sufficient access for delivery?
- Do you have 1m clearance around the machinery end?



Purpose and Temperature Requirements

- What temperature do you require?
- Do you need to freeze, chill or maintain temperature?

Power Supply Compatibility

- Do you have 3-phase power available?
- Do you have a 32amp plug?
- Is the power point within 10m of container placement?
- Have you confirmed your breaker and wiring capacity with an electrician?

CONSIDERATIONS

PRIOR TO DELIVERY

Ensure surface of delivery site is flat and free from obstructions.

How the container needs to be loaded on to the truck prior to delivery, to ensure doors are facing correctly.

Choosing the most cost effective and efficient delivery method.



CLIMATIGHT
CONTAINERS
THINKING OUTSIDE THE BOX

DELIVERY OPTIONS

Tilt Tray

The tilt tray slide loads and unloads from the end of the truck and requires 18m of space in front of the equipment being loaded/unloaded



Side Loader

The side loader requires a clearance space of 6m wide, 16m long and 4.5m high and must be able to access the container from the driver's side. Capable of transporting 20ft and 40ft containers. Side loaders can lift and carry up to 30,000kg under permit.



Hiab Crane

The Hiab crane truck requires a clearance space of 5m wide and 10m long. A Hiab can lift 5,600kg to a reach of 4m and 1,300kg to a reach of 15m.



CLIMATIGHT
CONTAINERS
THINKING OUTSIDE THE BOX

ENQUIRE TODAY

[CLICK HERE FOR
DIRECT LINK TO
OUR WEBSITE](#)

Western Australia

Unit 14, 4 Roper St
O'CONNOR
WA 6163

South Australia

Coghlan Rd
OUTER HARBOR
SA 5018

For more information on refrigerated containers or to enquire about a storage solution to suit you, don't hesitate to contact us!



0475 000 560



sales@climatight.com.au



CLIMATIGHT
CONTAINERS
THINKING OUTSIDE THE BOX